

Art  1920
Heritage

We apply genuine classic hand craft techniques on Furniture



COMPANY PROFILE

ArtHeritage.com.eg



A'DESIGN AWARD
WINNER 2017



“ART IS ESSENTIALLY THE AFFIRMATION,
THE BLESSING AND THE DEIFICATION OF EXISTENCE”

Friedrich Nietzsche

Content

BIOGRAPHY	3			REPLICA	54
• Art Nouveau Door	4	• Eleganza Cladding	30	• Cabinet on Stand 1678	56
• Royal Handle	8	• Boucher's Paravan	31	• Victorian Giltwood Console	58
• Art Nouveau Desk	10	• Queen Chair	32	• Grand Brazier 1742	60
• Louis XV Grand Desk	15	• Shell Banquette	34	• Brazier 1742	62
• Sun Door	16	• Royal Sofa	36	• Cinderella Console	63
• Supreme & Angel Door	17	• Royal Fire Screen	39	• X Frame Stool	64
• Fragrance Cladding	18	• Paphose Sofa	40	• Lion Banquette	68
• Portrait Cladding	20	• Royal Dining	42	• Napoleon Commode 1786	69
• Dream Cladding	22	• Royal Bed	44	• Thomas Chippendale Frame	70
• Twilight Cladding	24	• Conversation Conf. Table	46	• Crown Frame	73
• Perle Cladding	25	• Grand Mantelpiece	48	• Fauteuil a la reine 1755	74
• Le Luxe Cladding	26	• Oval Table	49	• Majestic Sofa	76
• Lady Victoria Cladding	27	• Royal Harp Dining Table	50	• Adam's Fauteuil 1765	77
• La Fame Cladding	28	• Grand Harp Dining Table	51	• Desk Boulle 1672	78
• Greatwall Cladding	29	• Harp Dining Table	52		
		• Elizabeth Frame	53		

BIOGRAPHY



Eng. Mohamed Sherif, "Art Heritage" C.E.O., is an heir to a family of artists, where almost every member practiced and appreciated fine arts. He definitely had a brilliant heritage as his family business in furniture making dates back to 1920.

Eng. Mohamed is rooted to truly talented ancestors, being a grandson to Eng. Youssef Khafagi, the Head of Antiquities Restoration Department at the Supreme Egyptian Council of Antiquities. Eng. Khafagi did the ancient Egyptian mummies, temple walls' restoration job himself; where he treated Pharaonic golden monuments and precious stones.

The chair in the picture is one of the earliest products of Eng. Mohamed Sherif family business, designed by his grandfather Eng. Youssef Khafagi. Eng. Mohamed's mother and his uncles have been professional practitioners of fine arts in different fields. "Art Heritage", the company name, is the expression of the inherited art in the family's generations. Eng. Mohamed Sherif enrolled in the furniture business at the age of 16, in his uncle's furniture factory and started designing at a very young age, as he possessed enough talent to place him among much older designers. He became the Chief of the Designing Department in the factory at the age of 17, and continued until he started his own furniture making business. Eng. Mohamed polished his talent with academic education; he completed his diploma in interior decorating from U.S.A. Eng. Mohamed's designs have always been truly appreciated especially when he introduced his Art Nouveau style design for a palace door at the International Design Award, A'Design Award, Italy. His designs for the Art Nouveau style door and The Royal Handle earned him the award in 2010-2011, 2014-2015 and 2016-2017 competitions.



Handmade

A' Design Certificate of Excellence 2011



Handmade

Art Nouveau Door

Art Heritage Designs

An A'Design Award winning Art Nouveau style door; designed and produced by Eng. Mohamed Sherif, C.E.O. Art Heritage Furniture. In his creation, Eng. Mohamed was inspired by the Art Nouveau themes and depicted the natural forms & curvaceous lines in his award winning design.



Handmade

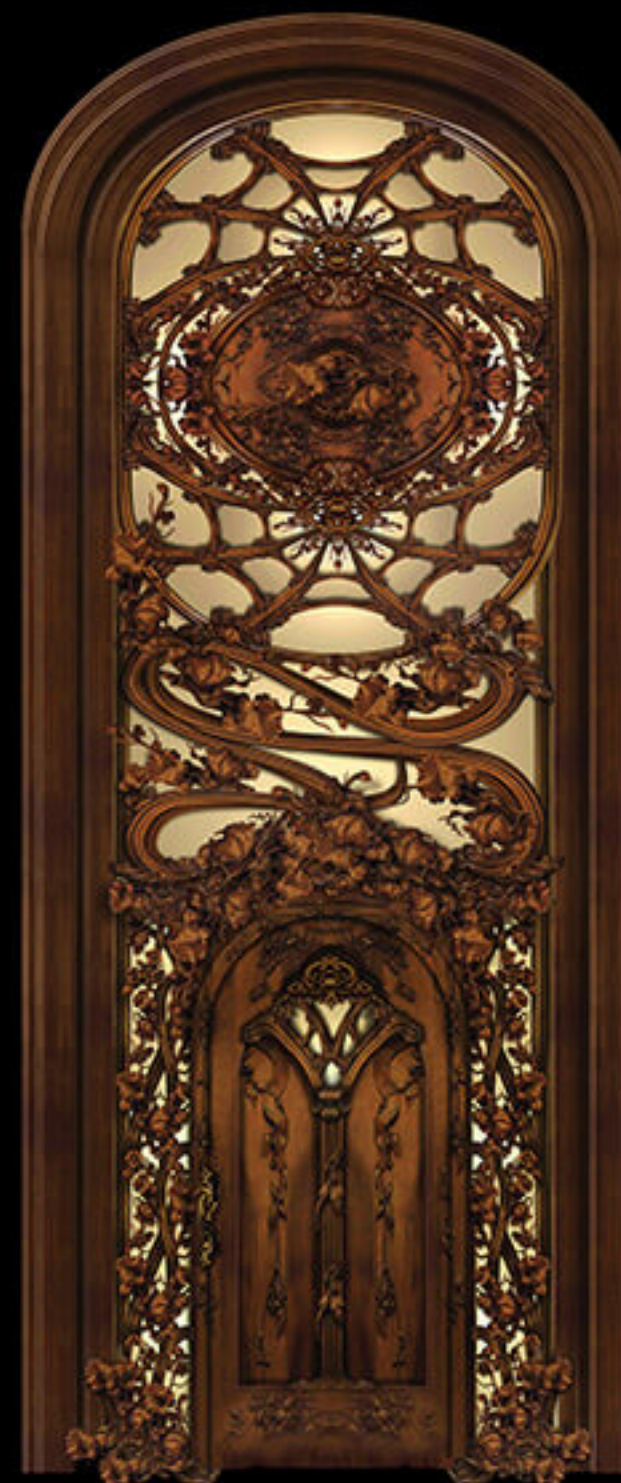
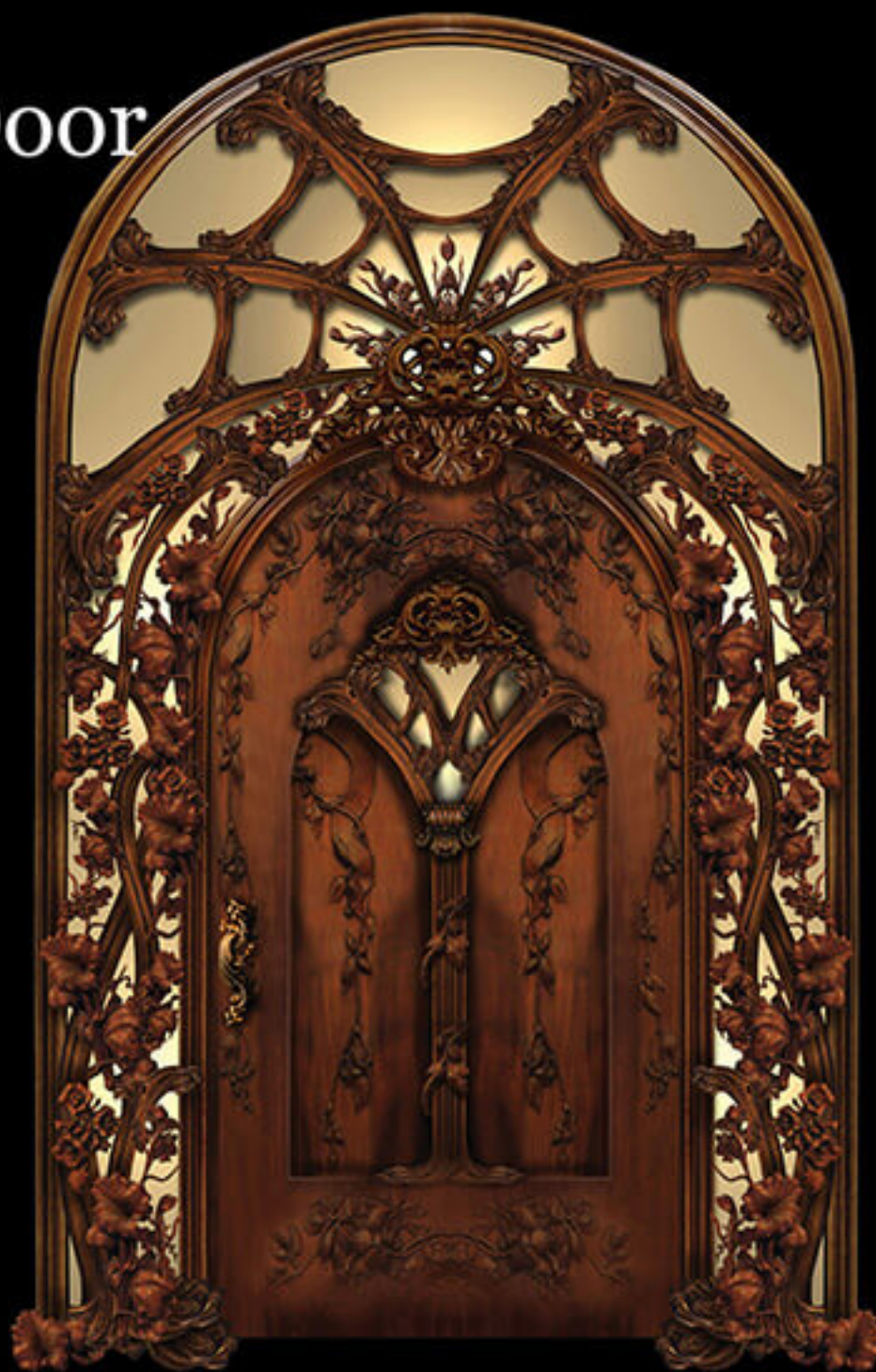
Art Heritage
1920

We apply genuine classic hand craft techniques on Furniture

Art Nouveau Door

Art Heritage Designs

Eng. Mohamed Sherif, Art Heritage key person, is a highly talented artist with an academic background in interior design. His design for the palace door earned him the International Design Competition 2010-2011 A'design Award, Italy. Art Nouveau is a special philosophy in the decorative arts most popular during 1890-1910. The art is characterized by natural forms in sinuous and organic shapes, described as "sudden violent curves generated by the crack of a whip". It is a total art in all ways of life representing dynamic flowing motifs, flames & shells textures. Noted practitioners are Carlo Bugatti (1856- 1940), Eugène Gaillard (1862-1933), Louis Majorelle (1859-1926).



Handmade

Art Nouveau Door

Art Heritage Designs



Handmade

Art
Heritage
1920

We apply genuine classic hand craft techniques on Furniture

7

ArtHeritage.com.eg

M. Sherif

A' Design Certificate of Excellence 2015



Royal Handle

Art Heritage Designs



Door handle, designed by Eng. Mohamed Sherif, Art Heritage C.E.O. and chief designer. Hand cast in bronze with dense flowing lines inspired by Art Nouveau Style, with a precious stone inlaid.



Handmade

A' Design Certificate of Excellence 2017



**A' DESIGN AWARD
& COMPETITION**


WINNER 2017
SILVER

Certificate of Excellence

This is to certify that


Mohamed Amin Sherif

*has won the Silver A' Design Award
in Limited Edition and Custom Design Category
in 2016 - 2017 period with design #49371:
Art Nouveau Desk - Office Desk*



15 April 2017, Milan / Italy

About The Silver A' Design Award
The Silver A' Design Award is a prestigious award given to top 100 worldwide designs that have achieved an exemplary level of excellence in design. Entries are voted by an experienced grand jury panel of peers, members, design professionals, academics & entrepreneurs. Designs are ranked based on standard deviation of jury votes to determine winners & submit on their evaluation criteria for each award category. A' Design Award has a philanthropic mission to create a global awareness and understanding for good design worldwide, for ultimate aim of the awards is to push designers, brands & companies to create superior products and projects that advance and benefit society.



Alexander D'Amico
PRESIDENT
A' DESIGN AWARD & COMPETITION

Roberto Minerva
VICE-PRESIDENT
A' DESIGN AWARD & COMPETITION

Chiara Marchi
COORDINATOR
A' DESIGN AWARD & COMPETITION



Handmade



Handmade

Art Nouveau Desk

Art Heritage Designs



Eng. Mohamed Sherif, Art Heritage C.E.O., introduces a masterpiece of his own design and production to present the extravagant style and craftsmanship mastery of Art Heritage. Eng. Mohamed was inspired with the Art Nouveau lines in designing this majestic desk, the lines on the front and corners amplify the art philosophy adopted and the ultra-high level of details clearly speaks of the skills & talent of Art Heritage staff.

Handmade

Art
Heritage
1920

We apply genuine classic hand craft techniques on Furniture

Art Nouveau Desk

Art Heritage Designs

Art Heritage produces the desk with either veneer or Boule inlaid marquetry on the top. The whole piece is handcrafted from beech wood. Art Nouveau is a special philosophy in the decorative arts most popular during 1890-1910. The art is characterized by natural forms in sinuous and organic forms, described as "sudden violent curves generated by the crack of a whip". It is a total art in all ways of life representing dynamic flowing motifs, flames and shells textures. Noted practitioners are Carlo Bugatti (1856-1940), Eugène Gaillard (1862-1933), and Louis Majorelle (1859-1926).



Handmade

Art Nouveau Desk

Art Heritage Designs



Handmade

Louis XV Grand Desk

Art Heritage Designs



Handmade

Art Heritage
1920

We apply genuine classic hand craft techniques on Furniture

15

ArtHeritage.com.eg

M. Sherif

Sun Door

Art Heritage Designs



Designed by Eng. Mohamed Sherif, Art Heritage C.E.O. and chief designer. Entirely handmade, carved beech wood door with music instruments shapes and natural motifs. The door casing is bronze mounted by the edge while the top arch is shaped as a circle with glass in wood decoration.



Handmade

Supreme & Angel Door

Art Heritage Designs



Handmade

Fragrance Cladding

Art Heritage Designs



Fragrance Cladding

Art Heritage Designs



Handmade

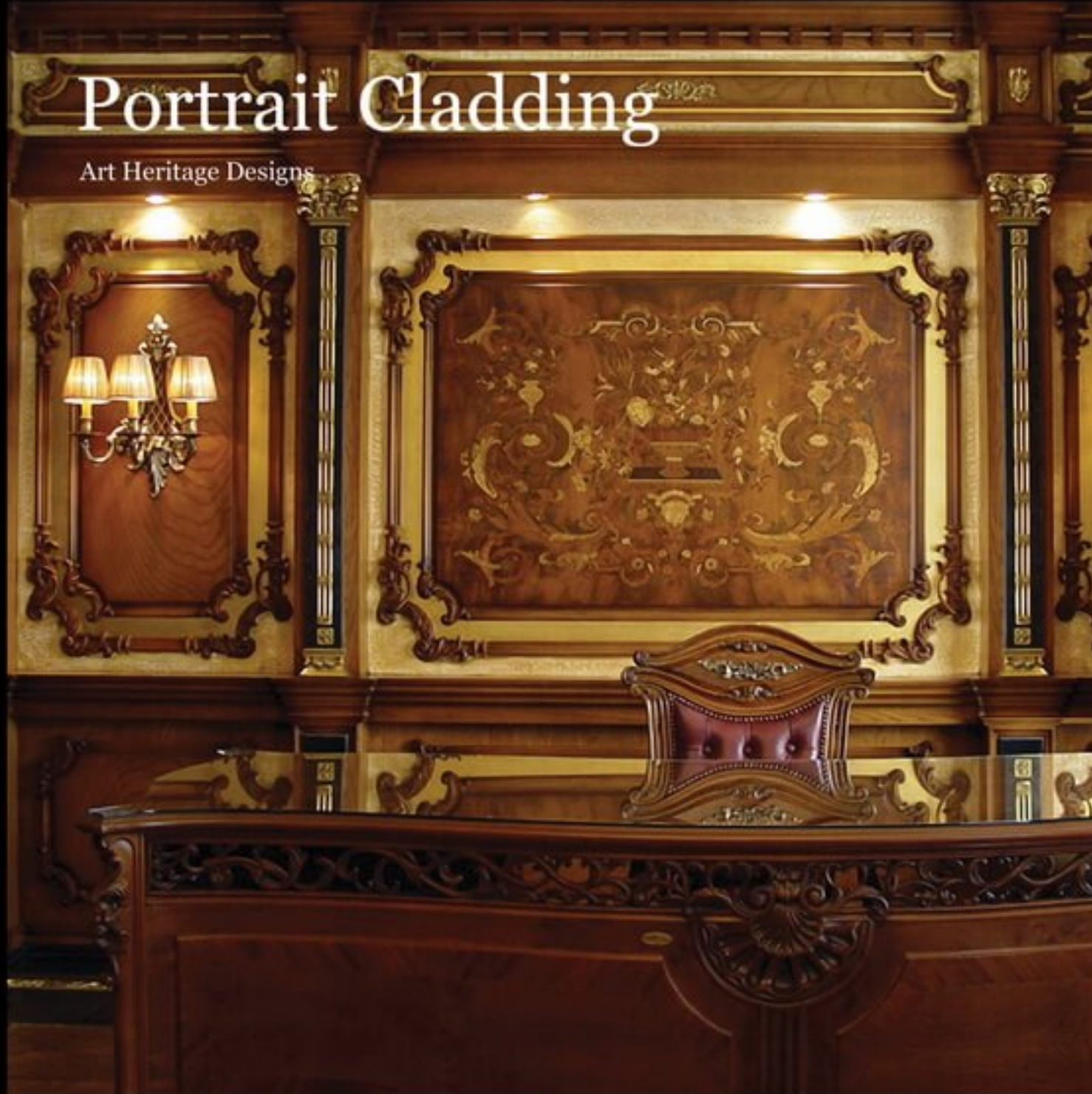
Portrait Cladding

Art Heritage Designs



Portrait Cladding

Art Heritage Designs



Handmade

Dream Cladding

Art Heritage Designs



Dream Cladding

Art Heritage Designs



Handmade

Art Heritage
1920

We apply genuine classic hand craft techniques on Furniture

23

ArtHeritage.com.eg

M. Sherif

Twilight Cladding

Art Heritage Designs



Handmade



We apply genuine classic hand craft techniques on Furniture



Perle Cladding

Art Heritage Designs



Le Luxe Cladding

Art Heritage Designs



Lady Victoria Cladding

Art Heritage Designs



La Fame Cladding

Art Heritage Designs



Art Heritage
1920

We apply genuine classic hand craft techniques on Furniture

Handmade

28

ArtHeritage.com.eg

M. Sherif

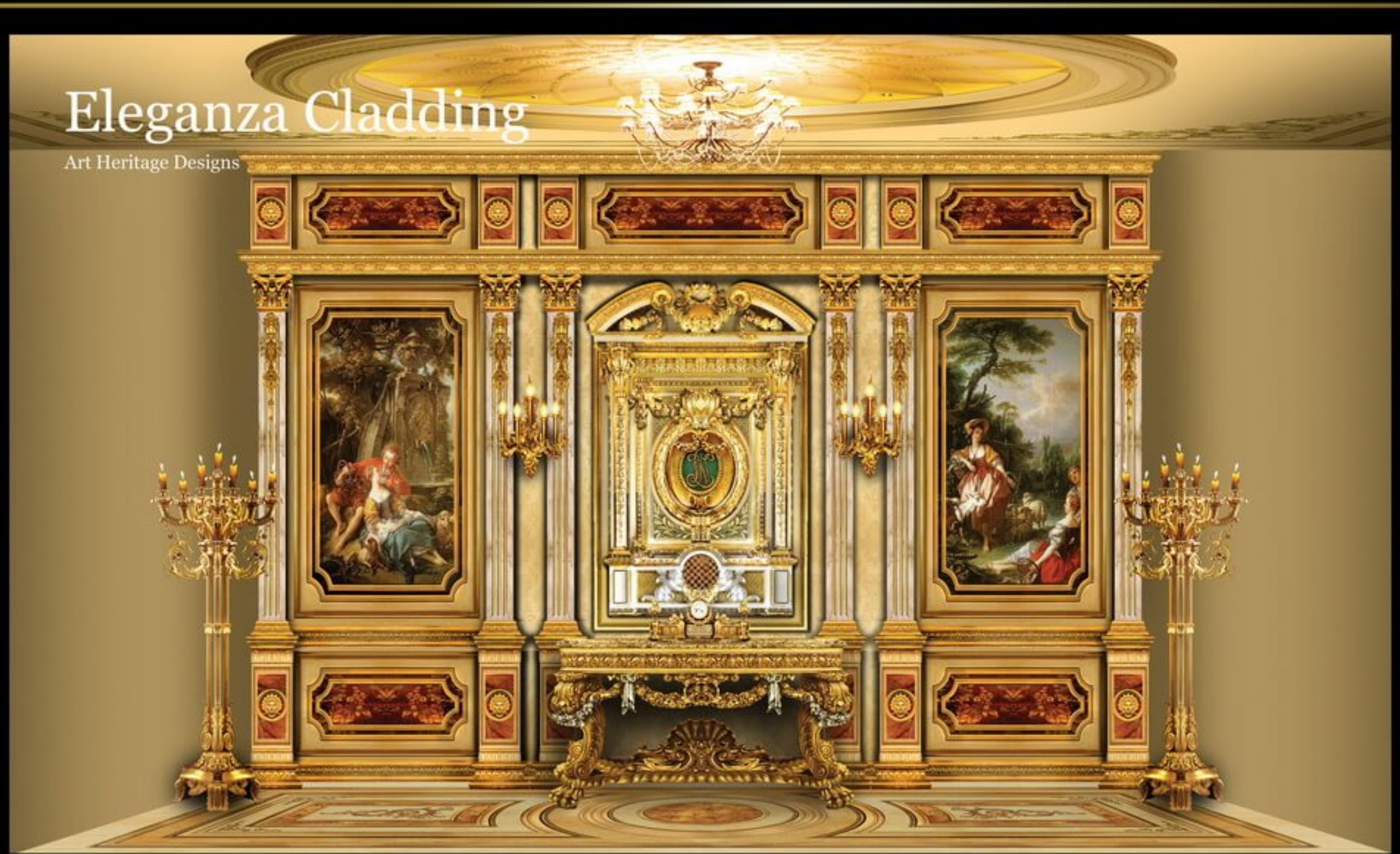
Greatwall Cladding

Art Heritage Designs



Eleganza Cladding

Art Heritage Designs



Handmade

Art Heritage
1920

We apply genuine classic hand craft techniques on Furniture

30

ArtHeritage.com.eg

M. Sherif

Boucher's Paravan

Art Heritage Designs

Art Heritage furniture excels at the classic art in this piece by blending carved giltwood with paint work; two masterpieces. The paravan frame, replica to an anonymous designer, represents two female masks centering a shell. The original paravan was designed in three sections. Art Heritage innovates a four section piece and replaces the mirror, placed in the original design, with a unique selection of rococo style paintings. The paintings Art Heritage uses are to the French artist Francois Boucher (1703 – 1770), a French painter in the Rococo style whose paintings are full of idyllic voluptuous classical paintings and decorative analogies. The pastoral theme of the paintings selected by Art Heritage is taken from several paintings by Boucher; the paintings remain untouched but they were arranged and linked to form a smooth transition.



Handmade

Queen Chair

Art Heritage Designs



Handmade

Queen Chair

Art Heritage Designs



Handmade

Shell Banquette

Art Heritage Designs



Designed by Eng. Mohamed Sherif, Art Heritage C.E.O. and chief designer. Entirely handmade, carved beech wood banquette in giltwood finish. The carving depicts eight shells on the sides and corners and natural motifs of flowers and leaves. The addition of the hand painted Royal Coat of Arms of the United Kingdom on the fabric is Art Heritage innovation; it depicts the lion of England and the Scottish unicorn standing over the blazon. The coat of arms is currently placed on the Buckingham Palace Gate.

Handmade

Shell Banquette

Art Heritage Designs



Handmade

Royal Sofa

Art Heritage Designs



Designed by Eng. Mohamed Sherif, Art Heritage C.E.O. and chief designer. The, entirely handmade, sofa has beautiful lines as if drawn by wind. Eng. Mohamed shows his skill in creating a unique production, both in design and carving precision. The sofa is in giltwood finish, the backrest fabric features hand painted motif that matches the sofa lines.

Handmade

Royal Sofa

Art Heritage Designs



Handmade

Royal Sofa

Art Heritage Designs



Handmade

Art
1920 **Heritage**

We apply genuine classic hand craft techniques on Furniture

38

ArtHeritage.com.eg

M. Sherif

Royal Fire Screen

Art Heritage Designs



Handmade

Paphose Sofa

Art Heritage Designs



Art Heritage introduces this royal classic Ottoman sofa as a representation of hand craft mastery. The center is hand carved, showing leaves and natural forms. The original Ottoman variety of this antique sofa was drawn between 14th and the 19th centuries by an anonymous designer but was not produced. Art Heritage Paphose Sofa carries only the outline of the original drawing while details and design alterations are Art Heritage innovation.

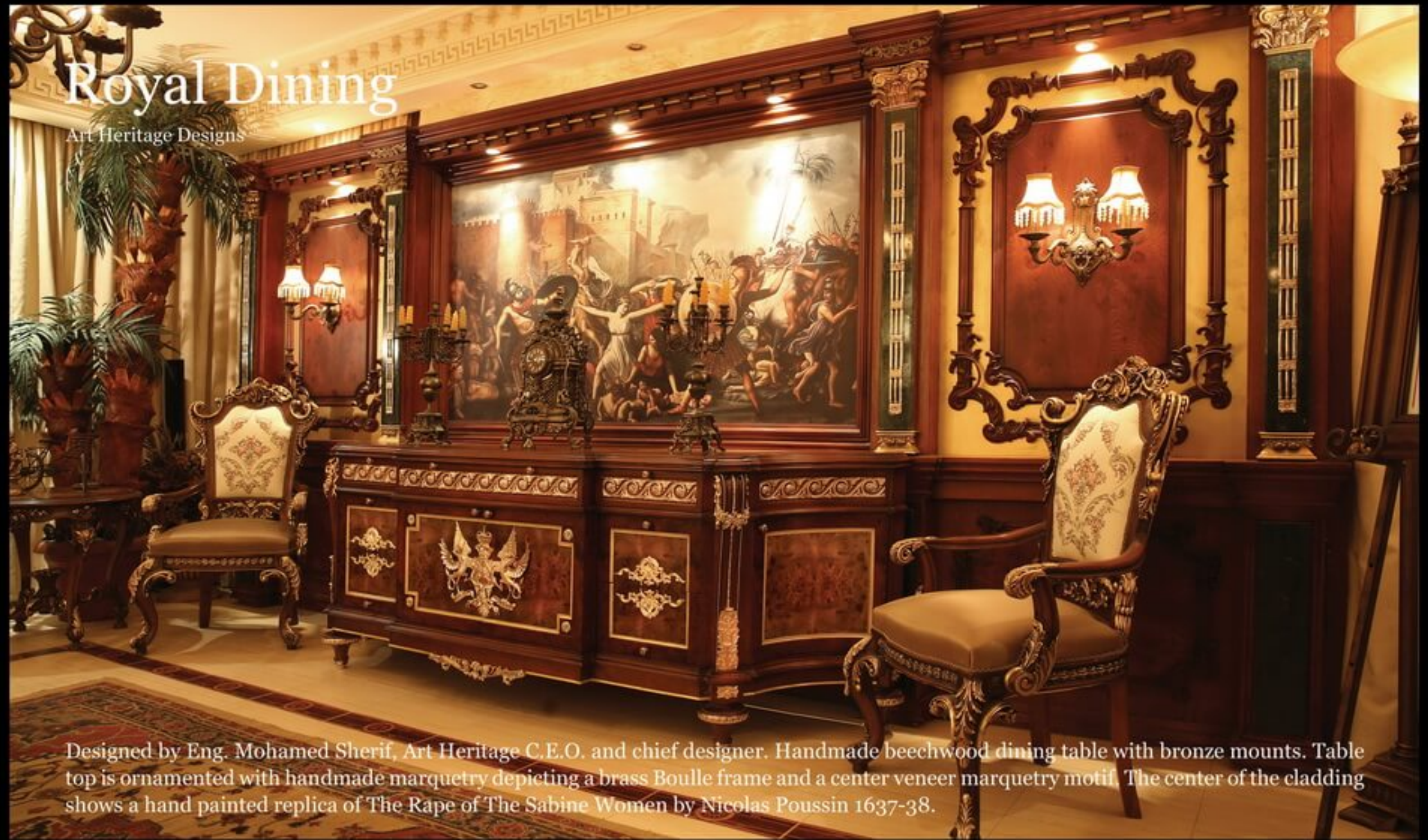
Handmade

Paphose Sofa

Art Heritage Designs



Handmade



Royal Dining

Art Heritage Designs

Designed by Eng. Mohamed Sherif, Art Heritage C.E.O. and chief designer. Handmade beechwood dining table with bronze mounts. Table top is ornamented with handmade marquetry depicting a brass Boulle frame and a center veneer marquetry motif. The center of the cladding shows a hand painted replica of The Rape of The Sabine Women by Nicolas Poussin 1637-38.

Handmade



Royal Dining

Art Heritage Designs

Handmade

Royal Bed

Art Heritage Designs



Designed by Eng. Mohamed Sherif, Art Heritage C.E.O. and chief designer. Entirely handmade, carved beech wood in giltwood finish. The bed demonstrates Art Heritage hand carving mastery with detailed minute carving and it is one of Art Heritage's masterpieces.

Royal Bed

Art Heritage Designs



Handmade

Conversation Conference Table

Art Heritage Designs



Designed by Eng. Mohamed Sherif, Art Heritage C.E.O. and chief designer. The table is entirely handmade in carved oak wood. Tabletop is paneled in veneer with bronze mounts on panels and table sides.

Handmade

Conversation Conference Table

Art Heritage Designs



Handmade

Art Heritage
1920

We apply genuine classic hand craft techniques on Furniture

Grand Mantelpiece

Art Heritage Designs



Handmade



We apply genuine classic hand craft techniques on Furniture

Oval Table

Art Heritage Designs



Handmade

Royal Harp Dining Table

Art Heritage Designs



Designed by Eng. Mohamed Sherif, Art Heritage C.E.O. and chief designer. Entirely handmade table with Boulle marquetry on the tabletop sides & gold plated Bronze mounts on the lower section. The table bottom center takes the shape of a harp with full gold plated bronze mounts.

Handmade

Grand Harp Dining Table

Art Heritage Designs



Handmade

Harp Dining Table

Art Heritage Designs



Handmade

Elizabeth Frame

Art Heritage Designs



Handmade



REPLICA



Cabinet on Stand 1678

Art Heritage | Replica

Attributed to Andre-Charles Boulle. Andre-Charles Boulle (1642-1732), French furniture maker and designer. A well-known designer of the Louis XIV period, Boulle was born in Paris, France. His designs were known for their massive size, brass, tortoiseshell ornamentation and costly extravagance. Many of his extant creations are at Versailles, Fontainebleau, the Louvre, and Windsor Castle. This Cabinet depicts King Louis XIV military victory, each character is a symbol; the cockerel (France) stands triumphant over the eagle (Roman) and the lion (Spain). The two figures are Hercules and Hippolyta (queen of Amazons); they represent, respectively, strength and bravery supporting the Cabinet. The original masterpiece is displayed at J. Paul Getty Museum Los Angeles. This Cabinet is one of the unique masterpieces that Art Heritage produces which not only shows our craftsmanship excellence but also tells a story of the French victory.

Our exceptional piece is entirely handmade of beech wood, with full veneer marquetry and brass mounts incorporating other elements. The Cabinet has secret compartments and drawers that can only be reached and unlocked by a certain manual mechanical technique.

Handmade

Cabinet on Stand 1678

Art Heritage | Replica



Handmade

Victorian Giltwood Console

Art Heritage | Replica

We have in our collection a majestic product that combines two design philosophies both made of beech wood and entirely handmade. The first is a very fine and large carved giltwood Rococo mirror frame, after the designs of Thomas Johnson, of the Victorian era; made around mid-19th century. The divided mirror plate has a swan's neck cresting which centers on a finely carved female mask and shell. The sides of the frame are carved with foliate 'C' and 'S' scrolls. Secondly, we adopt King George II design style in the console, giltwood carving depicting claws, a very tender shell and organic natural elements using beech wood multilayers.

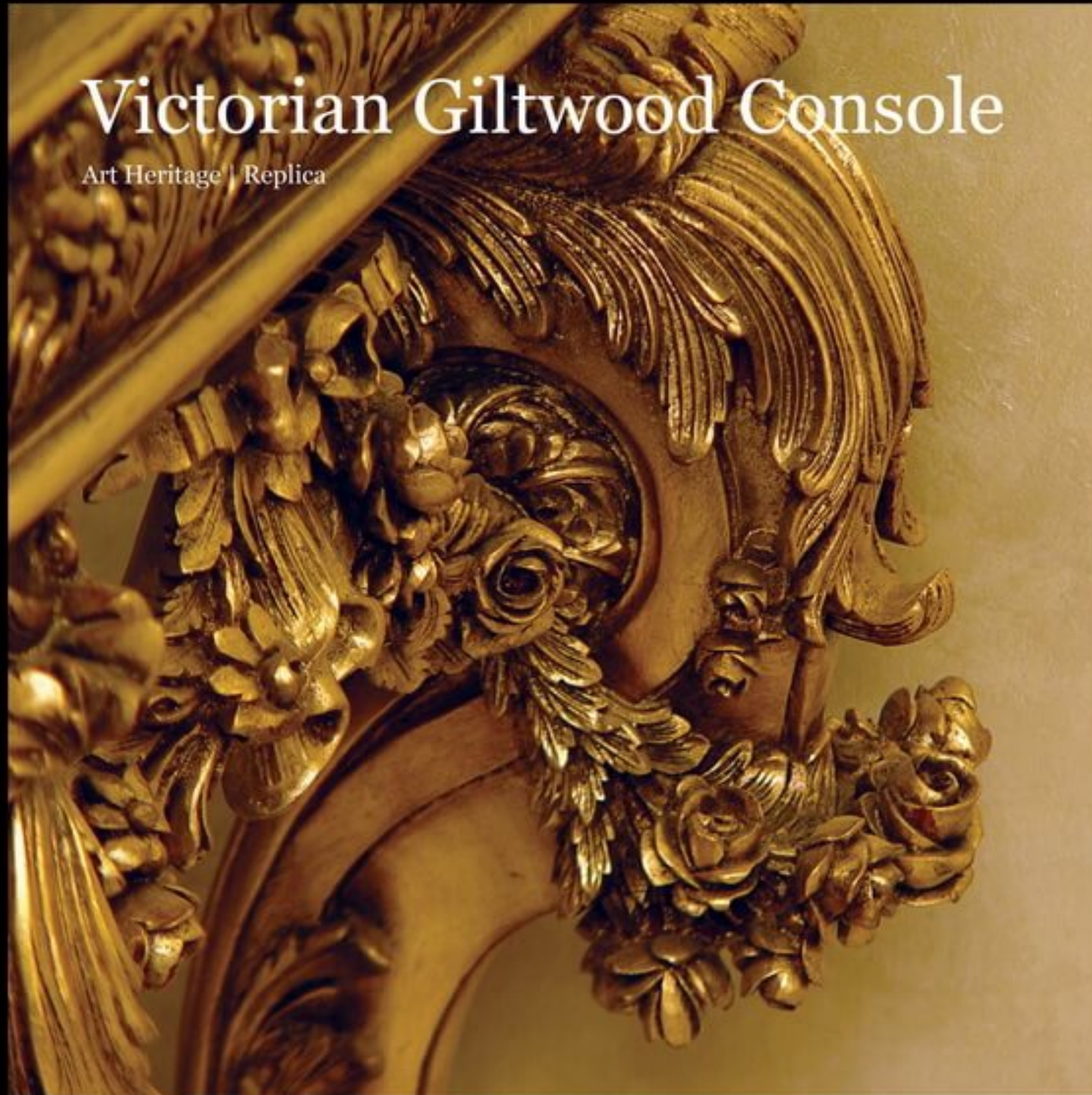
Art Heritage employs elite craftsmen in the process and innovates by combining both worlds of design where lines speak of beauty and harmony.



Handmade

Victorian Giltwood Console

Art Heritage | Replica



Handmade

Grand Brazier 1742

Art Heritage | Replica



Handmade

Grand Brazier 1742

Art Heritage | Replica



Handmade

Brazier 1742

Art Heritage | Replica

Art Heritage introduced this overwhelming handmade masterpiece in carved beech wood. Our piece represents flawless curves with extreme details accentuation performed by elite craftsmen. The original piece is cast in copper, while our piece is created in the much harder to carve beech wood. The piece depicts natural themes in the leaves and flowers forming the body of the brazier. The original copper brazier was made by Jean-Claud Duplessis by the directions of the king Louis XV.

It was given to Said Effendi, the Sultan's ambassador, now they are displayed in the Topkapi Palace in Istanbul Duplessis père was a goldsmith, sculptor and ceramics modeler, bronze- founder and decorative designer working in the Rococo manner. He served as artistic director of the Vincennes porcelain manufactory and its successor at Sèvres from 1748 to his death in 1774 and as royal goldsmith.



Handmade

Cinderella Console

Art Heritage | Replica



Replica to an anonymous designer, Entirely handmade, carved beech wood console in giltwood finish, carved on the console long sides, Feet and marble topped.



Handmade

X Frame Stool

Art Heritage | Replica



Handmade

X Frame Stool

Art Heritage | Replica

Art Heritage intensifies the elements of craftsmanship along with a cultural blend in this stool. This piece has been used ever since the kingdom of the Ancient Egyptians throughout the Romans until today; an exclusive portable stool for the renowned. We add a cultural element to the piece by hand painting the royal coat of arms of the United Kingdom on the cushion. Made by our highly skilled craftsmen, the stool is made of beech wood and carved with shapes of angels and flowers surrounded by leaves and natural elements. The wood is in giltwood finish and each ornament is hand painted with natural colors in order to add more life to the piece. The four angels on the corners represent holiness and serenity of the seated person, as the stool is often used by holy men as their portable seat. The addition of the hand painted Royal Coat of Arms of the United Kingdom on the cushion is Art Heritage innovation; it depicts the lion of England and the Scottish unicorn standing over the blazon. The coat of arms is currently placed on the Buckingham Palace Gate.



Handmade

X Frame Stool

Art Heritage | Replica



Handmade

X Frame Stool

Art Heritage | Replica



Handmade

Lion Banquette

Art Heritage | Replica



Handmade

Napoleon Commode 1786

Art Heritage | Replica



Handmade

Thomas Chippendale Frame

Art Heritage | Replica

Attributed to Sir Thomas Chippendale (1718-1779). He is a skilled master cabinet maker whose name has been used to describe the 18th century furniture design revolution in England and later on in the whole world. His famous book "The Gentleman and Cabinet Maker's Director" was the first published book for a cabinet maker, Catherine the Great and Louis XVI owned copies of the Director in its French edition.

Eng. Mohamed Sherif creates another one of a kind artistic masterpiece. This particular frame incorporates some of the most difficult lines and ornaments designed in Chippendale's guide "The Gentleman and Cabinet Maker's Director".

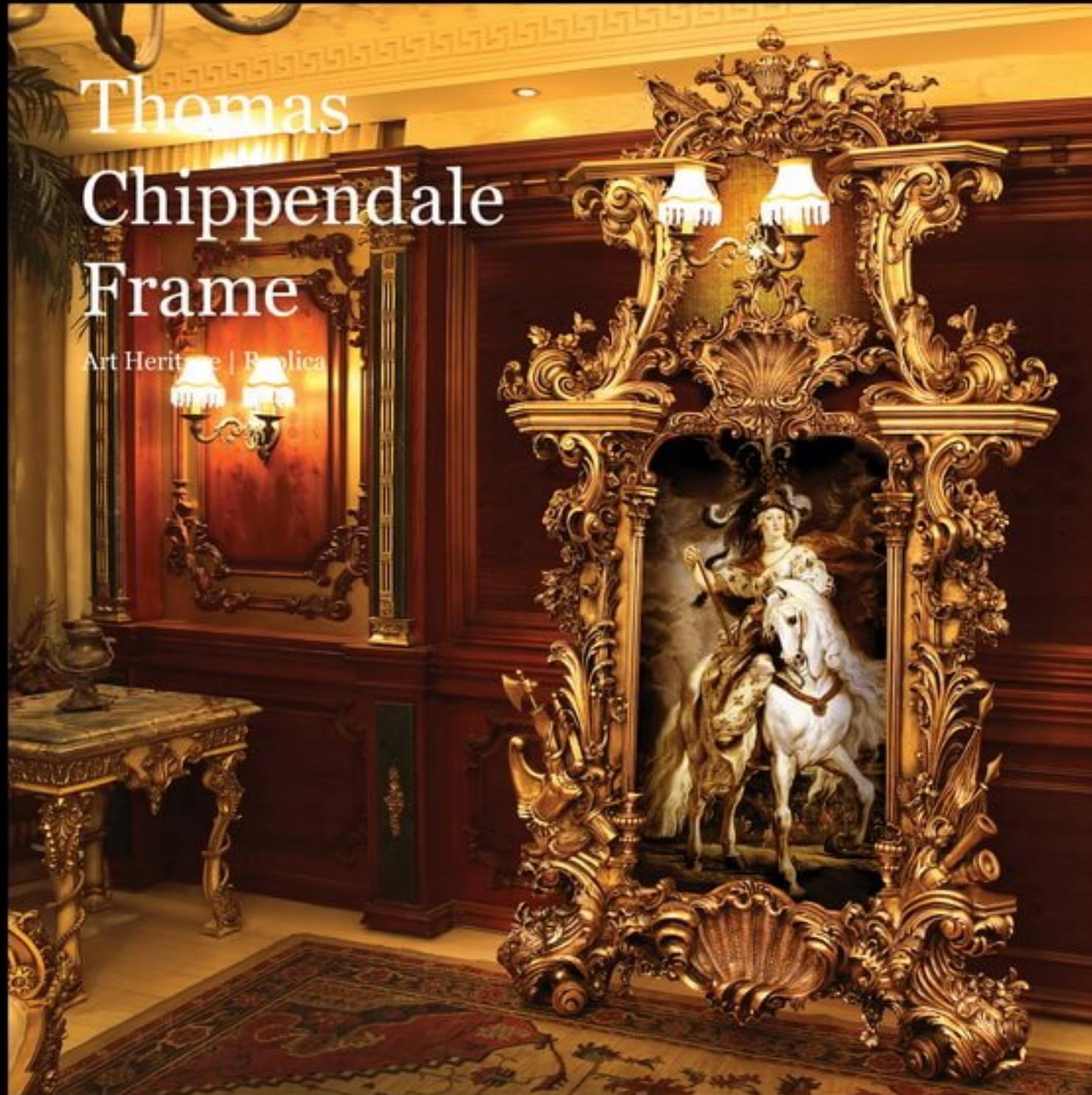
Inspired by Chippendale, Eng. Mohamed combines the most beautiful elements in his own creation. Our entirely handmade frame is carved from beech wood with the highest precision techniques measuring 245 cm high and 140 cm wide. Our production frame is mainly three elements; the top and bottom shells, the corners and the sides. The flow of the lines make it stand out as an exclusive item.



Handmade

Thomas Chippendale Frame

Art Heritage | Replica



Handmade

Thomas Chippendale Frame

Art Heritage | Replica



Handmade



We apply genuine classic hand craft techniques on Furniture

Crown Frame

Art Heritage | Replica

Replica to an anonymous designer. Entirely handmade, carved beech wood frame in giltwood finish. This masterpiece depicts flowing wavy lines.



Handmade

Fauteuil a la reine 1755

Art Heritage | Replica

Attributed to the carpenter Nicolas Heurtaut (1720-1771), Heurtaut played a big role in developing the symmetrical Rocaille style; all ornaments including flowers, shells heart shaped cartels are laid out in perfect proportions and solid design. This set has a long history line as it was a revolution in the design at that time. It has been established that they were made for Martial-Louis Beaupoil de Sainte-Aulaire, bishop of Poitiers. They later belonged to the chateau of Gorre in Haute-Vienne before being sold on in Paris on several occasions.

Art Heritage produces original masterpieces with more precision and attention to details as shown in this fauteuil's slight alteration in the feet carving. We add a lot to the beauty of the Fauteuil by extreme carving precision and presentation of the Rocaille style symmetry. Our Fauteuil is made of gilt beech wood and shows gentle flowing lines in perfect harmony with shell ornaments.



Handmade

Fauteuil a la reine 1755

Art Heritage | Replica



Handmade

Majestic Sofa

Art Heritage | Replica



Sofa is replica to Nicolas Heurtaut's canapé in 1753. Handmade carved beech wood in giltwood finish. The sofa is rich in details all around the frame. The fabric is hand embroidered with delicate motifs. Armchair matches the sofa with rich and detailed hand carving.

Handmade

Adam's Fauteuil 1765

Art Heritage | Replica

Attributed to Robert Adam, designer, and made by Thomas Chippendale. A George III style armchair, which was supplied to Sir Lawrence Dundas, Bt. for the Great Room at 19 Arlington Street, London in 1765. Thomas Chippendale is a skilled master cabinet maker whose name has been used to describe the 18th century furniture design revolution in England and later on in the whole world. His famous book "The Gentleman and Cabinet Maker's Director" was the first published book for a cabinet maker, Catherine the Great and Louis XVI owned copies of the Director in its French edition.

Art Heritage fauteuil is made of beech wood entirely hand carved with perfect proportions.

Handmade

Desk Boule 1672

Art Heritage | Replica



Handmade

Art
Heritage
1920

We apply genuine classic hand craft techniques on Furniture

78

ArtHeritage.com.eg

M. Sherif

Desk Boule 1672

Art Heritage | Replica



Handmade

Desk Boule 1672

Art Heritage | Replica



Handmade

Desk Boule 1672

Art Heritage | Replica



Handmade



SHOWROOMS S 90th St., beside Air Specialist Hospital.
The 5th District, New Cairo, EGYPT.

FACTORY New Cairo, EGYPT. 11835

PHONE +2 (010) 1 80 80 80 1

EMAIL info@artheritage.com.eg

WEBSITE ArtHeritage.com.eg

FACEBOOK fb.com/ArtHeritage.com.eg